

Accountability Report

Issued 2016–17

Baggett Elementary School

Dr. Charlotte Sadler, *Principal*

Dr. Craig Barlow, *Assistant Superintendent*



Local school improvement connected to district's strategic direction

Gwinnett County Public Schools' accountability system for improving schools is called the Results-Based Evaluation System (RBES). RBES fairly and systematically measures a school's progress, providing a process that clearly communicates expectations; reviews, monitors, and supports school performance; and evaluates that performance. This report reflects achievement data and state data reporting from the 2015–16 school year, as well as consolidated information on the school's effectiveness, based on multiple measures and student characteristics. Based on the data you will find in this report, school administrators,

teachers, and parent advisory groups developed this year's Local School Plans for Improvement (LSPI) which outline our improvement goals and guide the work we will do throughout the 2016–17 school year to support student learning. These improvement plans are connected to the school district's strategic direction and our core business of teaching and learning. Find our school's LSPI on the website. The Baggett council and school leaders collaborated on the highlights in this accountability report, which also serves as the school's annual report. **Please review this report to learn more about our improvement efforts and progress.**

CONTENTS

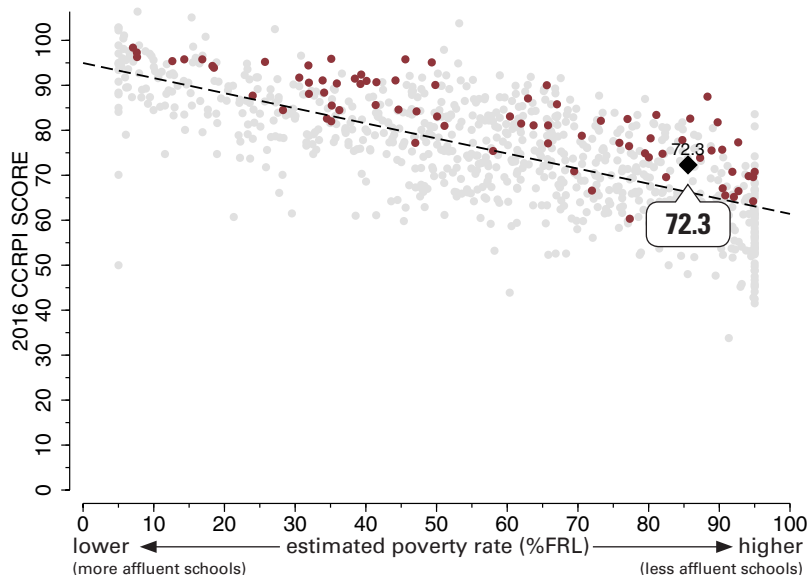
- About School Improvement and the School Effect
- 2015–16 Results
- 2015–16 State Reporting
- 2015–16 Highlights



The School Effect: Putting Baggett Elementary School's CCRPI score in context

The "school effect"—the impact of what happens in the classroom—acknowledges the work of our faculty and staff in meeting our students where they are academically, and helping them to make progress, no matter where they start. Schools all strive to add value to a child's education from year-to-year, causing students to make academic gains. One way to measure effectiveness in educating *all* students is to review a school's score on Georgia's College and Career Ready Performance Index (CCRPI), adjusting for the level of economic diversity at the school, to see the school effect on students' academic growth.

This graphic representation plots CCRPI scores for elementary schools in the state (gray dots) against the percentage of the student population receiving free-and-reduced-lunch (FRL Percentage), a measure of poverty. The plotted points form a trend line representing the typical achievement level of a school in Georgia with its level of student poverty. The graph shows how Baggett (represented by a large black diamond) and all GCPS elementary schools (maroon dots) fare when considering expected performance based on poverty measures. Dots above the line are higher-than-expected scores and dots below the line reflect lower-than-expected scores. *Note: Georgia schools that serve breakfast and lunch to all students at no cost are not included in this comparison.*



2015–16 Results: Georgia Milestones Assessment System

Georgia Milestones for Grades 3, 4, and 5

Last spring, Gwinnett students joined students across Georgia in taking state assessments called Georgia Milestones. Beginning in 2014–15, Georgia Milestones took the place of the Criterion-Referenced Competency Tests (CRCT) for Georgia students. This comprehensive assessment system measures how well students have learned the knowledge and skills outlined in the state-adopted content standards for English language arts, mathematics, science, and social studies. Students in grades 3 through 8 took an End-of-Grade (EOG) assessment in May of 2016.

The higher bar for student proficiency set by Georgia Milestones is aimed at better preparing students for college and career and providing a more realistic picture of academic progress. As with any new assessment, we anticipate that scores will initially be lower than they will be in future years as students and teachers become more accustomed to the new test and its format. That is one reason why the results from this past year were not used to determine promotion for 2015–16. (In addition, the State Board of Education waived the use of Milestones results for promotion decisions due to the potential impact of technical difficulties with online testing in other parts of the state.)

With the 2017 administration of Milestones, the Georgia Department of Education expects districts to be able to use results for some subjects at selected grade levels to determine placement under state and local promotion requirements.

To learn more about Georgia Milestones, visit testing.gadoe.org and click on Georgia Milestones Assessment System.

About Milestones Achievement Levels

The Milestones results are reported using four categories of achievement, described below. In previous state tests, achievement was reported in three categories (Does Not Meet, Meets, and Exceeds). Under the new system of reporting, proficiency is the target.

The tables on this page show the percentage of students who achieved at the level of **Proficient Learner** or higher. Students who achieve at the Developing Learner or Beginning Learner need additional academic support to succeed at the next grade level.

Distinguished Learner: Student demonstrates advanced proficiency, and is **well prepared for the next grade level** and for college and career readiness.

Proficient Learner: Student demonstrates proficiency, and is **prepared for the next grade level** and considered to be on track for college and career readiness.

Developing Learner: Student demonstrates partial proficiency, and **needs additional academic support** to ensure success in the next grade level.

Beginning Learner: Student does not yet demonstrate proficiency, and **needs substantial academic support** to be prepared for the next grade. (In the future, when these assessments are used to determine promotion, students in this level will not be promoted to the next grade.)

English Language Arts

Grade	Baggett ES	GCPS	Georgia
3rd	30.6	42.7	35.0
4th	26.0	44.6	35.3
5th	28.3	49.6	40.7

Mathematics

Grade	Baggett ES	GCPS	Georgia
3rd	32.5	48.7	40.0
4th	43.3	51.2	40.4
5th	29.4	48.8	38.2

Science

Grade	Baggett ES	GCPS	Georgia
3rd	21.9	43.7	35.3
4th	29.2	43.9	33.1
5th	19.3	45.1	39.2

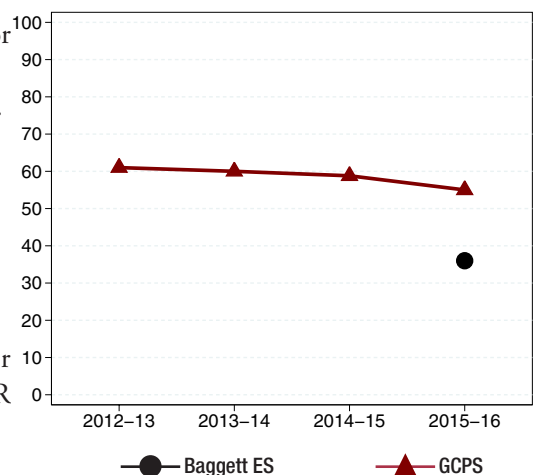
Social Studies

Grade	Baggett ES	GCPS	Georgia
3rd	26.0	39.5	30.4
4th	35.3	47.3	34.5
5th	13.1	39.0	30.5

The tables on this page show the percentage of students who achieved at the level of Proficient Learner or higher.

2015–16 Results: Norm-referenced Assessments: The Iowa Assessments

The Iowa Assessments measure a student's progress in key academic areas and allow for a comparison of their performance to that of students across the U.S. This nationally norm-referenced test was administered in Gwinnett in grades 2, 5, and 8 in 2015–16. Results from the fall administration help identify students' areas of academic strength as well as areas that need improvement. Teachers and schools use these results during the school year to inform instruction and monitor growth. The Complete Composite results to the right reflect overall performance on tests covering a variety of skill areas, including reading, spelling and other language arts conventions, vocabulary, mathematics, science, and social studies. This graph shows the average national percentile rank (NPR) of 5th graders' Complete Composite scores at Baggett Elementary and for GCPS as a whole over the last four years. As an example, a Complete Composite NPR of 60 indicates that, on average, students scored as well as or better than 60% of U.S. students on the test. An NPR of 50 is the national average.



2015–16 State Reporting: Georgia’s College and Career Ready Performance Index (CCRPI)

College and Career Ready Performance Index (CCRPI) is Georgia’s state-wide accountability system. CCRPI assesses how well students are prepared for college and careers and ensures that schools are focused on improving achievement among all students.

The index measures progress on accountability indicators such as content mastery, student attendance, and preparation for the next school level. Schools earn CCRPI points based on indicators that vary by grade and school level and align with measures of college- and career-readiness. Schools may earn up to a set number of points in three main categories (achievement, progress, and achievement gap), for a total of 100 possible points, with an additional 10 possible challenge points.

At the elementary school level, schools earn CCRPI achievement points tied to a number of factors, including the percentages of students meeting or exceeding standards on state assessments, the percentage of students reading at grade level, the percentage of students missing six or fewer days during the school year, the percentage of students learning English who are making academic progress, the percentage of students with disabilities who participate in the general education setting, and the percentage of students scoring in the Proficient Learner or Distinguished Learner achievement levels on the Georgia Milestones assessment.

Progress points are tied to the level of academic progress students make from year to year, while achievement gap points are earned as schools work to close the gaps between student subgroups. Challenge points reflect a school’s participation levels and achievement results for students with economic disadvantages (ED), English learners (EL), and students with disabilities (SWD).

In addition, schools may earn challenge points when they “exceed the bar” for participation levels in world languages and fine arts courses. Schools in which teachers use data for planning individualized instruction and those with STEM certification may earn extra points as well. Innovative practices with demonstrated achievement gains as well as interventions that result in a positive school climate also may earn challenge points.

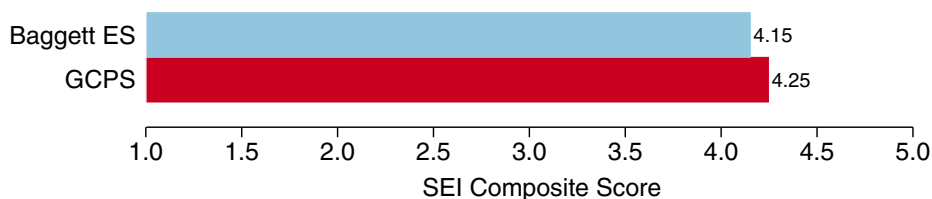
Baggett ES CCRPI Total Score		72.3
Achievement Points		26.6
Progress Points		33.2
Achievement Gap Points		6.7
Challenge Points		
ED/EL/SWD Performance– 3.8		5.8
Exceeding the Bar– 2.0		
<i>CCRPI Total Score is the sum of points in shaded cells.</i>		
School Climate Rating		NA
Financial Efficiency Rating		NA
<i>The 2015–16 star ratings were not available at the time CCRPI was released. Once available, they can be found on the GaDOE website in the CCRPI section.</i>		

Star Ratings

The School Climate rating, which awards stars on a five-star scale, takes into account discipline data, attendance, and perceptions of the quality and character of the school and its learning environment. New for 2015–16, the Financial Efficiency star rating is a measure of the cost effectiveness of a school, comparing the school’s spending per pupil to the overall academic achievement of its students. Ratings range from a half-star to five stars. A half-star indicates high spending per student (in the top 20% statewide) with low CCRPI scores (below a 50), while a five-star rating indicates lower levels of spending per student (in the bottom 20% in Georgia) with high CCRPI scores (90+ on average). The rating is calculated using three-year averages of spending and CCRPI scores. The School Climate and Financial Efficiency ratings for 2015–16 were not published at the time CCRPI results for the year were released in fall of 2016. Once available, parents can find them here: <http://www.gadoe.org/CCRPI/Pages/default.aspx>

Student Engagement

The Student Engagement Instrument (SEI) is a survey used to measure how engaged students are at school and with learning. When taking the SEI, students respond to items that cover a variety of topics related to their engagement in their education, including the level of support they receive from teachers, peers, and family, as well as their perceptions of school work and future educational goals. We measure student engagement at GCPS because it is related to important outcomes such as on-time graduation and postsecondary success. The bar graph below shows the average SEI Composite Score— a summary of a student’s responses across all items on the SEI— for Baggett Elementary School compared with an average of results for all GCPS elementary schools. The Composite Score can range from 1.0 to 5.0, with higher scores reflecting stronger student engagement.

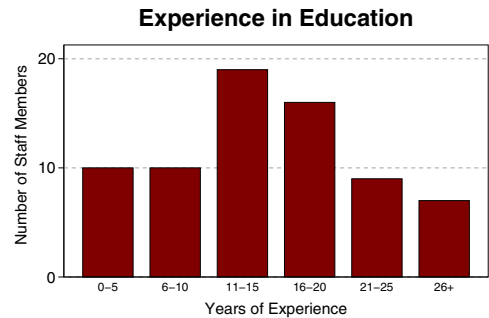
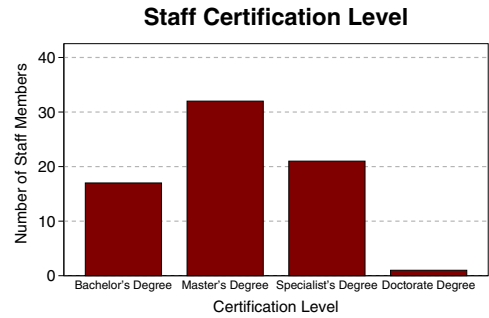


Baggett Elementary School

Other 2015–16 Highlights...

- In our inaugural year, Baggett engaged our new school community and welcomed students, parents, and community members by inviting them to an Open House event to view “our” new building and to our Dedication Ceremony during the fall.
- Joe Frank Uriz, representing a dedicated and talented group of teachers, was selected as Baggett Elementary’s very first Teacher of the Year by our staff.
- The Family Center at Baggett offered parent workshops for academic subjects as well as sessions on parenting, nutrition, prescription drug abuse, computer use, and learning English.
- All students participated in “specials” Discovery Classes for art, music, physical education, mathematics, computer, Spanish, and STEAM (science, technology, engineering, art, and mathematics).
- Baggett supported learning with a literacy specialist/Reading Recovery teacher. Many support staff members also provided side-by-side coaching during their push-in time and met with teachers for collaborative planning and coaching.
- Baggett Elementary offered enrichment opportunities, including Spanish Club, Art Club, Music Club, LEGO/PE Club, International Explorers Club, Technology/Coding Club, Girls on the Run Club, Wizzle Pro Math Club, Readers Rally, Science Club, STEM Club, Orchestra, and Chorus.
- Baggett completed training for implementation of Positive Behavioral Interventions and Support (PBIS). PBIS encourages positive behaviors with recognition for those students who exhibited appropriate school conduct, supporting a positive and safe school climate to maximize success for all students.
- Our FOCUS (gifted education) students learned about economics through market projects. They raised money to go toward our new gym floor.
- Baggett had wonderful participation for our inaugural Math Night and Literacy Night. Students and parents were able to participate in a variety of content-area activities across all grade levels.
- Baggett hosted our first International Festival, sponsored by the International Explorers Club. The club celebrates cultures and promotes interest in the study of international cultural awareness through games, crafts, cooking, videos, exhibits, local events, and field trips. The event drew strong business and community involvement.
- Our administrative team formed a group, Pawsitively Purrfect, which created music videos with motivational and positive messages for students.

2015–16 Staff Data



Student Data (2013–14 to 2015–16)

	School Year		
	15-16		
Enrollment	1117		
+American Indian/Alaskan Native*	0%		
+Asian*	6%		
+Black/African American*	40%		
+Hispanic or Latino, <i>any race</i>	43%		
+Multiracial, <i>two or more races</i> *	3%		
+Native Hawaiian/Pacific Islander*	0%		
+White*	8%		
Special Education	9%		
ESOL	42%		
Free/Reduced Lunch	86%		
Average Attendance	96%		

*Not Hispanic or Latino

School Safety Perceptions

Based on responses from those with an opinion who responded to the 2015–16 RBES Perception Survey...

- 85.4% of students agreed or strongly agreed that they felt safe at Baggett Elementary.
- 100% of parents agreed or strongly agreed that their child’s school was safe.

The mission of Gwinnett County Public Schools is to pursue excellence in academic knowledge, skills, and behavior for each student, resulting in measured improvement against local, national, and world-class standards.

Baggett Elementary School

2136 Old Norcross Road • Lawrenceville, GA 30044
(678) 518-6652 • <http://baggettes.org/home.html>
Dr. Charlotte Sadler, Principal

Gwinnett County Public Schools

437 Old Peachtree Rd., NW • Suwanee, GA 30024-2978
www.gwinnett.k12.ga.us

2016 Gwinnett County Board of Education

Dr. Robert McClure, 2016 Chairman;
Louise Radloff, 2016 Vice Chairman;
Carole C. Boyce; Dr. Mary Kay Murphy; and Daniel D. Seckinger
J. Alvin Wilbanks, CEO/Superintendent