

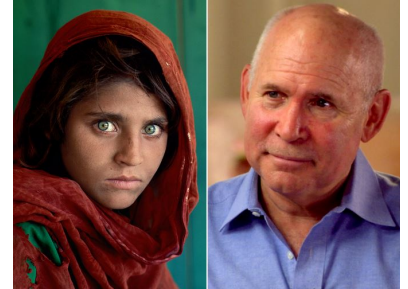
NEWS RELEASE

FOR IMMEDIATE RELEASE: February 18, 2019

News Media Contact: Communication and Media Relations, 678-301-6020

Gwinnett middle school to host artwork from iconic photographer

Starting **Wednesday, February 20**, the connections hallway at **Trickum Middle School** will serve as an art gallery featuring the work of National Geographic photographer **Steve McCurry**. McCurry is the photographer behind the famous picture of the “Afghan Girl,” the girl with the piercing green eyes who appeared on the June 1985 cover of National Geographic.



Nearly 100 large-scale photography prints by the world-renowned photographer will line the hallway at the school. McCurry’s images highlight children from around the world taken during the span of his career. Donated by the Besharat Gallery of Atlanta, these photographs will remain a centerpiece for students, faculty, and the community to enjoy for the next year. As part of the exhibit, students will be asked to select a photograph, research it, and then write about it.

--30--

GWINNETT COUNTY BOARD OF EDUCATION

Dr. Mary Kay Murphy
2019 Chairman
District III

Louise Radloff
2019 Vice Chairman
District V

Carole C. Boyce
District I

Steven B. Knudsen
District II

Everton Blair, Jr.
District IV

J. Alvin Wilbanks
CEO/Superintendent

THE MISSION OF GWINNETT COUNTY PUBLIC SCHOOLS

is to pursue excellence in academic knowledge, skills, and behavior for each student, resulting in measured improvement against local, national, and world-class standards.

437 Old Peachtree Road, NW
Suwanee, GA 30024-2978
678-301-6000
www.gwinnett.k12.ga.us

It is the policy of Gwinnett County Public Schools not to discriminate on the basis of race, sex, religion, national origin, age, or disability in any employment practice, educational program, or any other program, activity, or service.

2010 and 2014 Winner of

