



What you should know about the Education SPLOST (E-SPLOST)...

Providing new schools, classrooms, and technology for learning is a major challenge for a large, growing district like Gwinnett County Public Schools (GCPS). We've been successful, however, thanks to a penny in sales tax the voters made available to school districts several years ago. The Gwinnett County Board of Education wants to keep the improvements going by continuing the "E-SPLOST" now in place, so the Board is asking voters to extend it for five more years in a referendum set for **November 3**. *Why is the extension needed? What will it fund? What has the sales tax provided in the past?* Find the answers here!

What is an E-SPLOST for education?

The Special Purpose Local Option Sales Tax for education, also known as E-SPLOST, is a one-cent sales tax on all retail sales in Gwinnett County. This means that everyone who makes a purchase in Gwinnett County, including visitors, contributes to the support of local schools.

By law, an E-SPLOST can be used only for certain capital projects, like buildings, furnishings, buses, and computers. It cannot be used for salaries or for the day-to-day operational expenses of a school system.



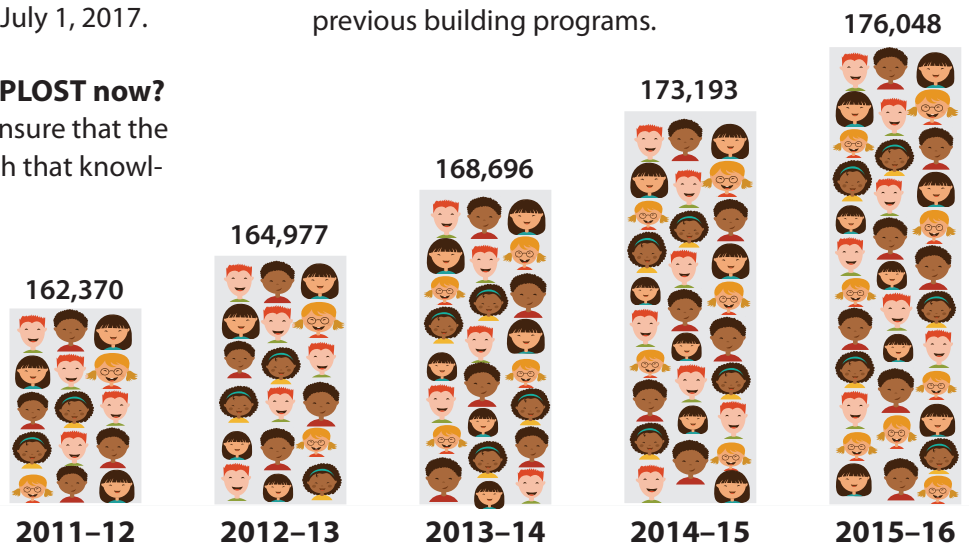
Is the proposed E-SPLOST a new tax? How long would it be in effect?

The E-SPLOST is not a new or additional tax but a continuation of the one-cent tax already being collected on sales. That tax sunsets on June 30, 2017. If voters approve the extension, the penny would be collected for another five-year period, beginning July 1, 2017.

Why is the district renewing the E-SPLOST now?

Approval in November of 2015 would ensure that the penny will continue to be collected. With that knowledge, GCPS could more aggressively plan the next building program to meet the district's needs as enrollment continues to grow.

Since the 2011-12 school year, GCPS has grown by approximately 3,000 students each year. Projections indicate that level of growth will continue for the next few years.



What will be funded if voters approve a continuation of the sales tax for education?

Gwinnett County Public Schools plans to do the following:

- **Construct 4 new schools** (two theme-based high schools to relieve Norcross and Meadowcreek high schools, an elementary school in the Meadowcreek Cluster, and an elementary school in the Berkmar Cluster).
- **Renovate and add classrooms to 9 existing schools** (Benefield Elementary School, Berkeley Lake Elementary School, Chesney Elementary School, Lilburn Middle School, Richards Middle School, Berkmar High School, Brookwood High School, Grayson High School, and Parkview High School).
- **Provide technology improvements in every cluster** to support teaching and learning.
- **Catch up on preventive maintenance** of existing facilities.
- **Purchase school buses and land, and pay off existing debt** associated with previous building programs.

How much will the proposed E-SPLOST raise for the school district?

A total of \$950 million is projected to be raised in the five-year collection period. It will be shared by GCPS and Buford City Schools (BCS), based on each district's enrollment. GCPS will receive up to \$927,675,000 and BCS will receive up to \$22,325,000 if the total amount is collected.

The ballot question on the E-SPLOST mentions \$330,000,000 in general obligation (GO) bonds that will be approved as well. Why are bonds needed?

This will be the third E-SPLOST to include approval of general obligation bonds as part of the ballot question. These bonds will provide the district with funding prior to the collection of the sales tax, allowing us to get a jumpstart on building needed classrooms. The GO bonds will be paid for with sales tax proceeds as that revenue is collected.

What happens if voters do not approve continuation of the E-SPLOST?

The E-SPLOST is the primary source of funding for building and maintaining quality school facilities for students. Without this source of funds, the school district will be limited in its ability to provide new schools and to maintain existing school facilities. The E-SPLOST also has been a key funding source for ensuring that technology for students and teachers is updated. Educational technology is changing. The E-SPLOST is essential for GCPS to effectively meet the teaching and learning needs of our students and teachers and to improve communication with parents.

What are key dates for voters?

Oct. 12 Absentee and Early Voting begins.

Nov. 3 Election Day— Polls are open 7 a.m. until 7 p.m.

How has the E-SPLOST been used in the past to support schools?

Gwinnett County voters first approved the E-SPLOST in 1997, and voted to continue the sales tax in 2001, 2006, and 2011. Previous E-SPLOST funds have been used to build nearly 60 new schools, helping the school system keep pace with enrollment growth. In addition, E-SPLOST has funded classroom additions and renovations, technology enhancements at all schools, and the purchase of school buses. A portion also was used to retire debt from previous bond referenda. In every E-SPLOST, all projects promised were delivered! The facilities and technology funded by the current E-SPLOST are found below and on the following pages.

The following projects have been completed or are planned in the 2012–2017 capital improvement program, which is funded by revenue from E-SPLOST and GO Bonds.

Opening

2013	Replacement Relocation	GIVE Center West Gwinnett Online Campus	2015	Replacement	** Summerour Middle School moves to new building at location that was previously GIVE Center West.
2014	Addition New Addition Addition	Alcova Elementary School Northbrook Middle School North Gwinnett High School Rockbridge Elementary School (Opened one year early)	2017	New	** Old Summerour Middle School facility removed from site; construction underway for new Norcross Cluster elementary school (opening ahead of schedule in 2016).
2015	New New New New	Baggett Elementary School Graves Elementary School Discovery High School Jordan Middle School	2018	New	** GIVE Center South (4221 Centerville Hwy. in Snellville)
2016	Renovation Addition Addition Addition	* Monarch School renovated for a new Duluth Cluster middle school Twin Rivers Middle School North Gwinnett Middle School * Camp Creek Elementary School			
2017	Addition Addition	* Peachtree Ridge High School * Meadowcreek High School buildout of 3rd floor			

In addition to new schools and additions, the current E-SPLOST is providing air conditioning for all middle and high school gyms and all elementary school activity buildings, along with all kitchens that did not have air conditioning.



This list is subject to change due to funding and enrollment trends.

*Projects partially funded with GO Bond proceeds.

** Projects funded from GO bond proceeds based on current revenue projections.

From E-SPLOST to eCLASS

What technology has been delivered to GCPS schools?

BYOD

The addition of wireless routers has allowed schools to move forward with the district's BYOD (Bring Your Own Device) initiative, embracing the use of student-owned devices as part of the classroom experience.



Curriculum and Instruction (C&I) Tool

Online course pages are a key feature of the C&I Tool. Teachers and students can post and interact with digital materials, websites, closed discussion forums, and more. Students can submit work electronically and keep files in their own "electronic lockers"—from home and at school!



Electronic Gradebook

One of the first components of eCLASS to roll out was a new electronic gradebook that provides teachers with a broad range of data about their students and their achievement.

Online Collaboration

Teachers and students benefit from the ability to share ideas and learn from each other through closed discussion forums. They also can collaborate online via discussion threads in the Curriculum & Instruction (C&I) Tool and on teachers' online communities.

MY eCLASS

MYeCLASS Student Portal

The student portal provides students with access to the resources they need most.

Students can log in to access digital textbooks, grades, resources, a media catalog, and their teachers' course pages, anywhere they have Internet access.

Student Information System

All schools have access to an online registration feature in the new student information system. Other components of the student information system will be available to elementary schools in 2016 and to middle and high schools in 2017.

Ask your school about the technology improvements that have been made at your school or in your cluster. In addition to eCLASS, there are a number of other technology improvements that have been completed in the E-SPLOST program for 2012–2017.

Professional Development and Evaluation Tool

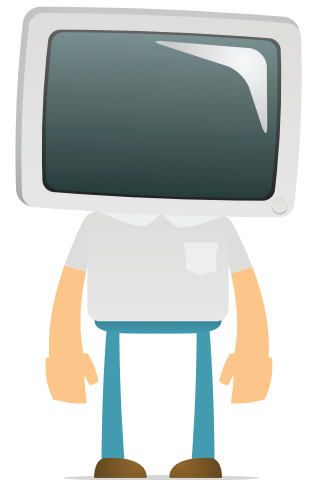
Technology helps Gwinnett teachers to become better teachers, supporting their professional growth as they work to improve instruction and, ultimately, student learning.

Security Upgrades on Campuses

The addition of new video camera systems enhance security in the school common areas in all schools. Also, GCPS is partnering with the county to provide emergency notification systems in all schools and a new visitor management system for all elementary and middle schools.

Video Library

In addition to having the capability to make videos as part of the teaching and learning process, teachers have access to an extensive video library... another way to bring learning to life.



Upgraded Technology in ALL Elementary Schools

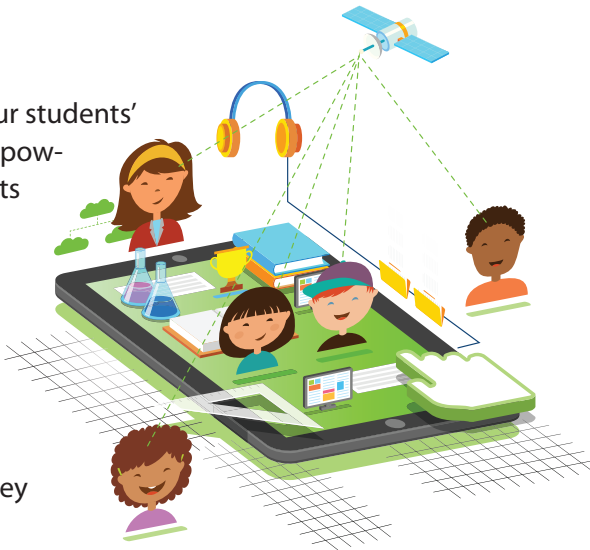
By January of 2016, the technology in all elementary schools will be updated. These updates include new computers for labs, a wireless infrastructure, laptops and project carts, document cameras, high-definition projectors, and more!

From E-SPLOST to eCLASS

How is technology transforming teaching and learning?

Bringing it with BYOD

Technology is a part of our students' everyday lives. Instead of powering down, GCPS students can power up when they come to school. Students use technology devices to expand their learning options. With a rich array of resources available to them, students are engaged in learning as they pursue their interests.



Providing Access to Materials

Classrooms are not limited by textbooks or contained in four walls. Students and teachers access apps, resources, videos, and even online experts as part of today's classroom experience.

Turning Students and Parents into Partners

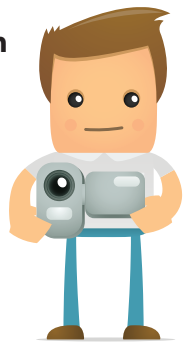
What is tonight's homework? What grade did my child get on that last quiz? How can I help with tonight's math assignment? The student and parent portals make this information, and more, available 24-7.

Turning Data into Information

With eCLASS assessments, students can review for tests and quizzes and check for understanding. Teachers can use this information to design lessons that help students learn based on where they are in their learning and where they need to be.

Using 'Lights! Cameras! Action!' to Learn

Video is a teaching and learning tool for Gwinnett students. From viewing instructional videos to creating videos to show what they have learned, students see video as an engaging component to learning.



Giving Them Something to Talk About... and a Way to Do it

eCLASS offers a virtual option for students and teachers to discuss learning. In fact, some students who may be hesitant to speak up in class become stars on classroom discussion boards. It's just one more way to check for understanding.



Knowing Students and How They Learn Best

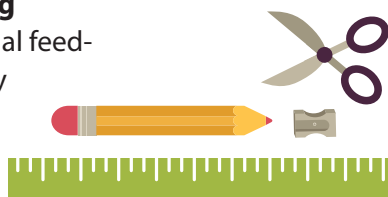
Personalized learning allows students the freedom to learn at their own pace. Technology is a key to helping students extend their learning beyond a lesson, find additional resources, or tackle a tricky topic.

Inspiring Higher Levels of Engagement

With technology, teachers can take lessons to the next level. Students don't just read a book... they dive deep with eCLASS. They might respond to questions online, create a video review, or even interview the author virtually. Higher levels of engagement lead to higher achievement!

Turning it *In* Equates to Turning it *Up* via Online File Sharing

Creative lessons, personal feedback, and accountability are a drop in the bucket when it comes to how Gwinnett teachers are using the C&I Tool's "dropbox" and "locker" features.



Applying Learning to Real Life

Technology allows students to explore the world in which they live and one day will work. Project-based learning allows students to show what they know through a project with real-world impact. The High School Academy model uses technology to help students prepare for college and careers.

Helping Students can be as Easy as A-B-C

Teachers access data that alerts them when students are having Attendance, Behavior, or issues in a Course that can interfere with learning.

Developed by Gwinnett County Public Schools
for informational purposes only
437 Old Peachtree Road, NW, Suwanee, GA 30024-2978
www.gwinnett.k12.ga.us
September 2015

