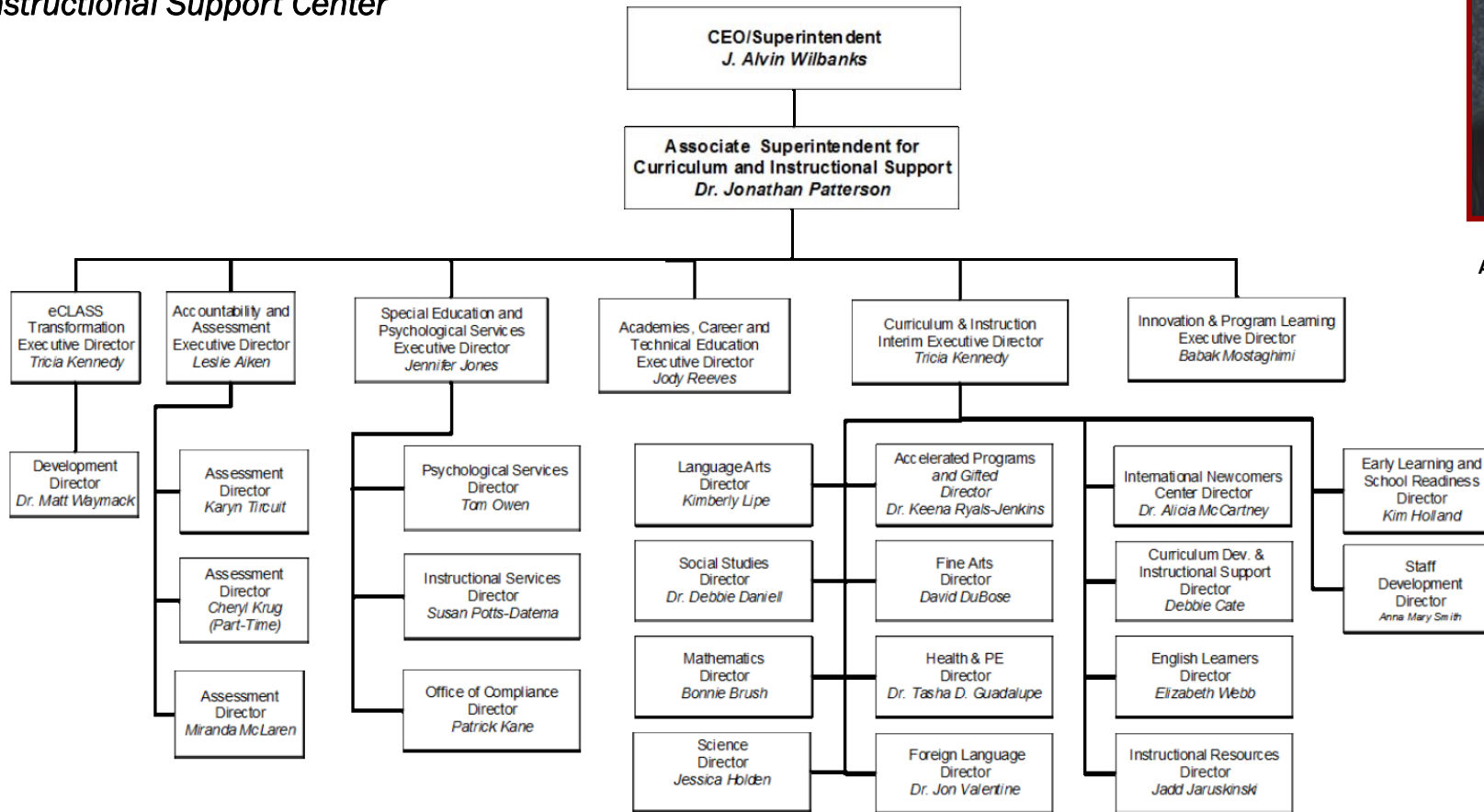


**Division of Curriculum and Instructional Support**  
**Dr. Jonathan Patterson, Associate Superintendent**  
**678-301-7030/fax 678-301-7254**  
**Instructional Support Center**



**Dr. Jonathan Patterson,**  
**Associate Superintendent**



**Strategic Objectives:**

- Increase student achievement through effective development, instruction, and assessment of Academic Knowledge and Skills (AKS)
- Increase student achievement through effective revision and implementation of a Balanced Assessment System, using analysis of results to inform instructional decisions.
- Increase student college and career readiness for all student populations.



## Department of eCLASS Transformation

**Tricia Kennedy, Executive Director**

678-301-7293 / fax: 678-301-7254  
(Instructional Support Center)

The **Department of eCLASS Transformation** facilitates the cross divisional development and implementation of eCLASS. eCLASS is a digital content, learning, assessment, and support system initiative being developed by Gwinnett County Public Schools. It is a multi-year integrated enterprise solution that will integrate existing technology resources and projects with a number of new resources and applications to enhance student engagement and the teaching and learning process. It will bring together curriculum and instructional resources, assessment items, professional development, student information, and gradebook functions in one place, making it easier for teachers to access tools that will help them improve student learning.

**Dr. Matt Waymack, Director of Development**

678-301-6134 / fax: 678-301-7254  
(Instructional Support Center)



## Department of Accountability and Assessment

**Leslie Aiken, Executive Director**

678-301-7025 / fax: 678-301-7202  
(Instructional Support Center)

The **Department of Accountability and Assessment** provides leadership and support by assisting schools in measuring student performance against national, local, and world-class standards, as well as supporting the needs for students as they work to achieve those standards.

## Office of Standardized Assessment

**Cheryl Krug, Director (Part-Time)**

678-301-7157 / fax: 678-301-7202  
(Instructional Support Center)

The **Office of Standardized Assessment** provides support for local schools in the administration and score analysis for all standardized assessments including IOWA, Georgia Milestone Assessments, CogAT, High School Gateway and GKIDS.



## Office of District Assessment

**Karen Tircuit, Director**

**Miranda McLaren, Director**

678-301-7053 / fax: 678-301-7202  
(Instructional Support Center)

The **Office of District Assessment** is responsible for leadership in the development, revision and implementation of Gwinnett County developed assessments including Student Performance Goal Assessments and District Assessments.



## Office of Accountability

**Miranda McLaren, Director**

678-301-7053 / fax: 678-301-7202  
(Instructional Support Center)

The **Office of Accountability** provides local schools with support in the understanding and use of the Georgia College and Career Readiness Performance Index (CCRPI).



## Department of Special Education and Psychological Services

Jennifer Jones, Executive Director

678-301-7110 / fax: 678-301-7222

The **Department of Special Education and Psychological Services** supports the Individual Educational Programs of students ages three through twenty-one years of age who are eligible for special education and related services within the district. The special education services are provided on a continuum from the least restrictive to more restrictive environments and are contingent upon educational needs of the student. The department provides a full array of assessment and special education interventions for students requiring such services. The Department works collaboratively with students, schools, families, and the community to increase student achievement and to promote post-secondary success for all students with disabilities.

### Office of Instructional Services

Susan Potts-Datema, Director  
678-301-7107 / fax: 678-301-7222  
(Instructional Support Center)

The **Office of Instructional Services** provides leadership and support for the delivery of special education instructional programs. This office works collaboratively with local schools to assist students with disabilities in acquiring the knowledge and skills specified by their Individualized Education Program, and local and state assessment standards. Staff development opportunities are provided for assistant principals, teachers, paraprofessionals, and central office staff.



### Office of Psychological Services

Tom Owen, Director  
678-301-7100 / fax: 678-301-7098  
(Instructional Support Center)

The **Office of Psychological Services** provides an extensive array of psychological services to each of our schools. The services are designed to assist schools with the implementation of research-based interventions for students with academic and/or behavior problems. School psychologists provide comprehensive psycho-educational assessments, participate on Student Support Teams (SST) and special education teams. Psychologists also consult regularly with teachers and parents, counsel students, participate in crisis situations and provide in-services for our teachers regarding a wide variety of topics.



### Office of Special Education Compliance

Patrick Kane, Director  
678-301-7104 / fax: 678-301-7222  
(Instructional Support Center)

The **Office of Special Education Compliance** supports schools in legal matters arising from federal and state regulations governing the education of students with disabilities. The duties of the office include coordinating all due process issues such as early resolution conferences, mediations, and due process hearings. The office also coordinates Section 504 issues for students throughout the district.





## Department of Curriculum and Instruction

**Tricia Kennedy, Interim Executive Director**

678-301-7290 / fax: 678-301-7208

(Instructional Support Center)

The **Department of Curriculum and Instruction** leads the development of a world class curriculum and the effective implementation of Quality Plus Teaching Strategies. The office promotes the Academic Knowledge and Skills curriculum, supports instruction and assessment of the AKS through a variety of resources, facilitates instructional materials reviews and adoption as well as provides staff development training for teachers and staff. Gwinnett County Public Schools' Curriculum and Instruction Department houses the curriculum offices that lead and support systemwide instruction and assessment of the Academic Knowledge and Skills (AKS) as well as Online Campus.



### Office of Language Arts

**Kimberly Lipe, Director**

678-301-7011 / fax: 678-301-7208

(Instructional Support Center)

The **Office of Language Arts** provides leadership and instructional support to schools in the area of Language Arts curriculum. The office assists teachers and staff with appropriate resources and training to teach students through a balanced literacy approach to become successful readers, writers, listeners, and oral communicators.



### Office of Science

**Jessica Holden, Director**

678-301-7036 / fax: 678-301-7208

(Instructional Support Center)

The **Office of Science** provides leadership and support to schools in the area of Science curriculum and instruction. The office supports teachers and staff with strategies, resources, and training to teach problem-solving, critical thinking and communication skills which are embedded in the curriculum throughout the students' K-12 science experience.



### Office of Curriculum Development and Instructional Support

**Debbie Cate, Director**

678-301-6061 / fax: 678-301-7208

(Instructional Support Center)

The **Office of Curriculum Development and Instructional Support** provides leadership and support for all subject areas within the Division of Curriculum and Instruction. The office supports the local schools and subject area departments in the development of and approval of AKS through the annual process of the Gwinnett Educational Management System (GEMS) committee meeting. This office also supports local schools with resources and tools to provide student interventions.



### Office of Mathematics

**Bonnie Brush, Director**

678-301-7037 / fax: 678-301-7208

(Instructional Support Center)

The **Office of Mathematics** provides leadership and instructional support to schools in the area of Mathematics curriculum. The office supports the development of students into competent mathematical problem solvers with a deep conceptual understanding of numbers. Students will reason and communicate mathematically, make connections among mathematical ideas, and become proficient with appropriate computational tools and techniques.



### Office of Social Studies

**Dr. Debbie Daniell, Director**

678-301-7028 / fax: 678-301-7208

(Instructional Support Center)

The **Office of Social Studies** provides leadership and support to schools in the area of Social Studies curriculum and instruction. The office provides resources to enhance student mastery of the Academic Knowledge and Skills (AKS) through an authentic K-12 approach integrating discipline-based content with interpretative skills focused on maps and globes, information processing, social participation, and problem solving. Therefore, students should develop a strong understanding of themselves and their role and responsibility in society by discovering the heritage of their nation within a global context. Opportunities are provided for students to relate the past to the present and to build an awareness of the similarities and differences that exist between the nations and cultures of the world.

### Office of English Learners Programs (EL)

Elizabeth Webb, Director  
678-301-7077 / fax: 678-301-7049  
(Instructional Support Center)

The **Office of English Learner Programs (EL)** provides leadership and support to ensure that English Learners attain proficiency in English as quickly as possible, go on to meet and exceed grade level expectations, and graduate prepared for college and/or careers. Support services include guidance on research-based best practices for instruction and assessment, quality professional development for teachers and leaders, and technical assistance regarding policies and procedures, including clear and concise information regarding federal and state requirements.



### Office of Fine Arts

David DuBose, Director  
678-301-7015 / fax: 678-301-7203  
(Instructional Support Center)

The **Office of Fine Arts** provides leadership and support to schools in the area of Fine Arts which includes dance, music, theatre arts, and visual arts. Commitment and support by central and local level administrators, community, parents, and students enable the GCPS Fine Arts programs to achieve quality standards as an essential element in a world-class system of schools.



### Office of Foreign Language

Dr. Jon Valentine, Director  
678-301-7020 / fax: 678-301-7209  
(Instructional Support Center)

The **Office of Foreign Language** provides leadership and support to schools in the area of Foreign Language curriculum and Dual Language Immersion. The office provides resources and training workshops for teachers and staff enabling them to provide quality instruction, encourage interdisciplinary collaboration as they target different languages and diverse cultures.



### Office of Accelerated Programs & Gifted Education

Dr. Keena Ryals-Jenkins, Director  
678-301-7020 / fax: 678-301-7017  
(Instructional Support Center)

The **Office of Accelerated Programs & Gifted Education** provides leadership and support to schools in the area of Gifted Education curriculum. The Gifted Education program manages resources and training to enhance learning opportunities that are advanced and accelerated in content and pace. Gifted education classes offer academic experiences that extend the Academic Knowledge and Skills.



### Office of Health and Physical Education

Dr. Tasha D. Guadalupe, Director  
678-301-7040 / fax: 678-301-7009  
(Instructional Support Center)

The **Office of Health and Physical Education** provides leadership and support to schools in the area of Health and Physical Education curriculum. The office provides resources and training workshops for teachers and staff. Students learn to become advocates of healthy living, choose healthy behaviors for life and develop a physically active lifestyle. Students are also taught to maintain a health-enhancing level of physical fitness during their school-age years and beyond.



### Office of Instructional Resources and Support

Jadd Jarusinki, Director  
678-301-6828 / fax: 678-301-6829  
(Instructional Support Center)

The **Office of Instructional Resources & Support** manages the procurement, distribution, and implementation of quality instructional materials and technology resources to meet the needs of all learners. Schools are supported with the selection, purchase, inventory, and effective implementation of instructional resources. The review, pilot, and adoption process for new instructional resources is managed and directed through this office. In addition, this office oversees and provides course number support for the district.



### International Newcomers Center

Dr. Alicia McCartney, Director  
678-985-5200/Fax: 770-277-4524

The **International Newcomers Center** provides educational evaluations and placement services for students relocating from outside of the United States and new to Gwinnett County Public Schools.



### Early Childhood and School Readiness

Kim Holland, Director  
678-301-7297/Fax: 678-301-7208  
(Instructional Support Center)

The **Office of Early Childhood and School Readiness** strives to ensure that all students enter Kindergarten ready to learn at high levels. In creating partnerships with parents, public and private organizations as well as businesses, we are able to align developmental and academic standards for children birth to 5 and develop and implement effective instructional practices aimed at school readiness. Systems for monitoring student school readiness skills are coordinated with local elementary schools and influence the direction of the work. This office also provides information and resources about child development to all stakeholders.





**Office of Staff Development**  
**Anna Mary Smith, Director**  
**678-301-6143**  
**(Instructional Support Center)**

The **Office of Staff Development** provides professional growth opportunities, products, and services that are designed to advance the system's vision, mission, and goals; to enhance employee performance; and to develop employee capacity to lead in a system of world-class schools. We are committed to the development and support of professional learning that is research-based, data-driven, student-focused, continuous, and sustainable over time. We provide learning experiences and opportunities for teachers in content, pedagogy, and processes. These opportunities are sponsored and led by the central office curriculum departments and/or the local school. Teachers have multiple venues for gaining the knowledge and skills necessary to provide exceptional instruction to the students of our district. Our department also provides learning opportunities designed to increase the knowledge, skills, and overall performance of our support staff. These services range from mini-courses in communication skills to ongoing (year-long) courses for specific job-related competencies.

---



**Department of Academies, Career and Technical Education**  
**Jody Reeves, Executive Director**  
**678-301-7050 / fax: 678-301-7070**  
**(Instructional Support Center)**

The **Department of Academies, Career and Technical Education** provides leadership and support to teachers in the Technical Education field which prepares high school students for postsecondary education and the demands of the 21st century economy. All courses provide an environment where students can learn the relevance of combining technical skills with academic knowledge. Various resources and training workshops are available to assist teachers and staff in delivering quality instruction in these areas. Development and implementation of the Academies education model in high schools are also led from this department.

---



**Department of Innovation and Program Learning**  
**Babak Mostaghimi, Executive Director**  
**678-301-7180**  
**(Instructional Support Center)**

The **Department of Innovation and Program Learning** leads the development of GCPS' innovation incubation, learning, and implementation infrastructure in support of the system's goal of becoming a system of world-class schools. IPL partners with teachers, principals, clusters, and other departments to pilot innovative programming and system improvements that increase student achievement.